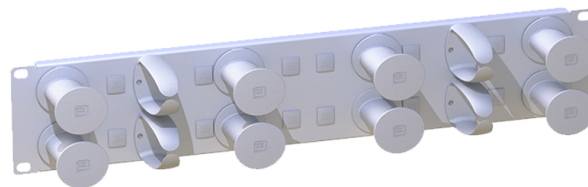


2U Patch Cord Storage Panel



Item Description

The 2U Patch cord storage panel with detachable rings and bend radius spools is designed to manage patch cords of various lengths. The individual hooks and spools can be placed as per the installer's preference to manage patch cords effectively whilst protecting the bend radius at all times. The patch cord storage panel can be supplied in a range of different colours such as black, grey and polished metal depending on the customers preference.

Features/Benefits

- Detachable rings and spools to be placed as per installers preference
- 2U to provide cable management between patch panels
- 19" rack mountable
- Provides patch cable management with minimal attenuation loss

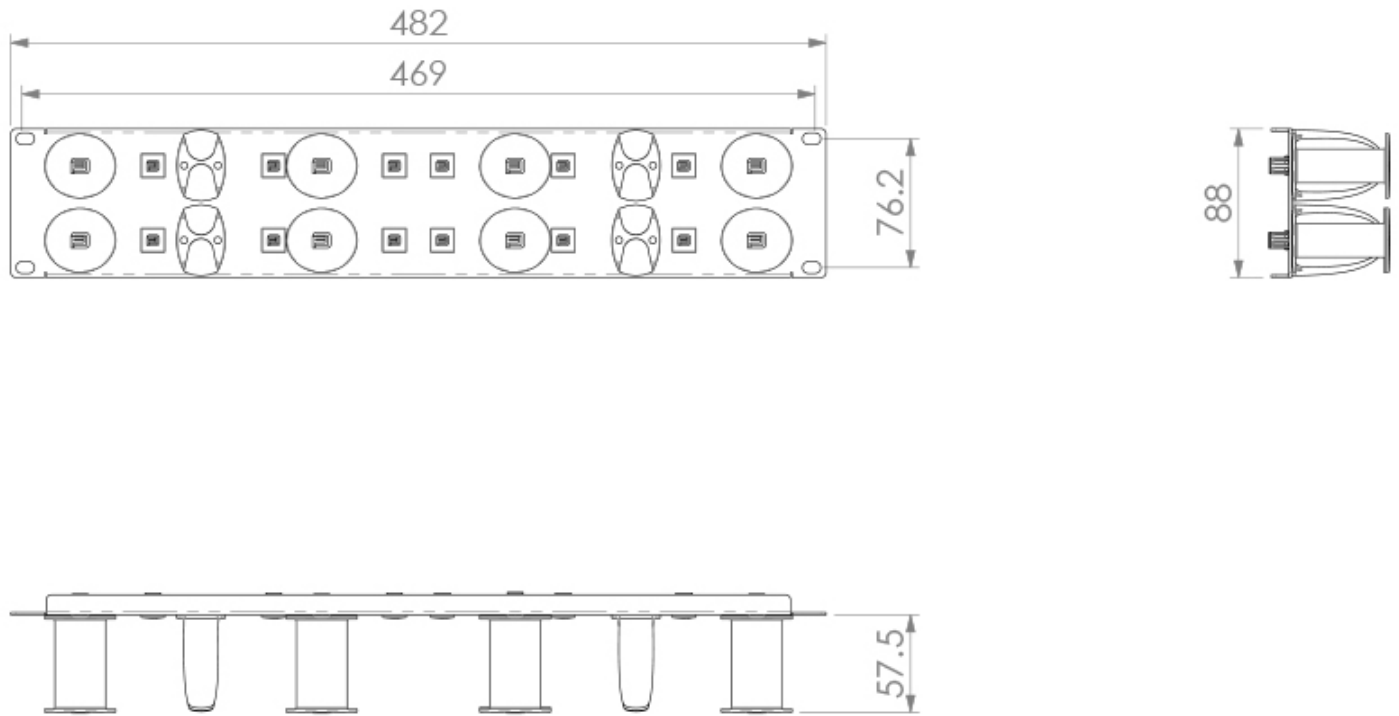
Applications

- Data centres, premise installations, telecommunication networks
- Ethernet, Fibre Channel, ATM, LAN, MAN and WAN
- Data communication
- Indoor applications

Specifications

ELEMENT	CHARACTERISTIC
Height (mm)	88
Width (mm)	482
Depth (mm)	57.5
Net weight (kg)	0.6
Number of cable rings 58mm	4
Number of cable spools	8
Material	Cold Rolled Steel
Material thickness (mm)	1.2
Plate Colour	Black RAL 9004, Grey 7035 or Polished Metal
Ring and spool Colour	Dark Grey 7015 or Grey 7035
Operating temperature (°C)	-40 to +60
Designed in accordance with	TIA/EIA 568.C, ISO/IEC 11801, EN50173, IEC60304, IEC61754,
Compliant to	RoHS, Reach/SVHC

Technical drawing



Ordering information

DESCRIPTION	PART NUMBER
Black 9004 with Grey RAL 7015 Hooks and spools	2UCABLEBAR/PL04
Light Grey RAL 7035 with Light Grey RAL7035 Hooks and spools	2UCABLEBAR/PL05
Polished Metal with Light Grey RAL 7035 Hooks and spools	2UCABLEBAR/PL06